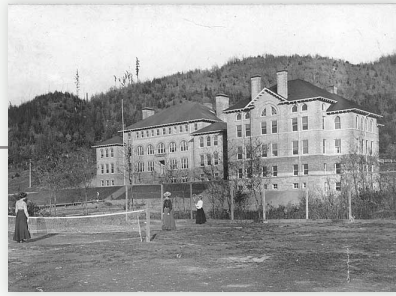


A history of WECU



1936

The first meeting of the Bellingham Teachers Credit Union (BTCU) is held at the Roeder School Building. A shoe box holds initial credit union deposits.



1936

Membership opens to the faculty and staff of the Washington State Normal School (now Western Washington University).



1972

Faculty and staff of Whatcom County Community College (now Whatcom Community College) are welcomed to BTCU.



1975

BTCU becomes Whatcom Educational Credit Union.



1980

WECU merges with Medical and Hospital Credit Union, which served employees of St. Joseph Hospital.



2002

WECU Field of Membership expands to include all persons who live, work, worship or go to school in Washington.



2014

Jennifer Kutcher succeeds Wayne Langei as WECU's second ever President & CEO.



2018

WECU rebrands and launches new website, core operating system, and online banking platform.